

DOWNHOLE
PRODUCTS

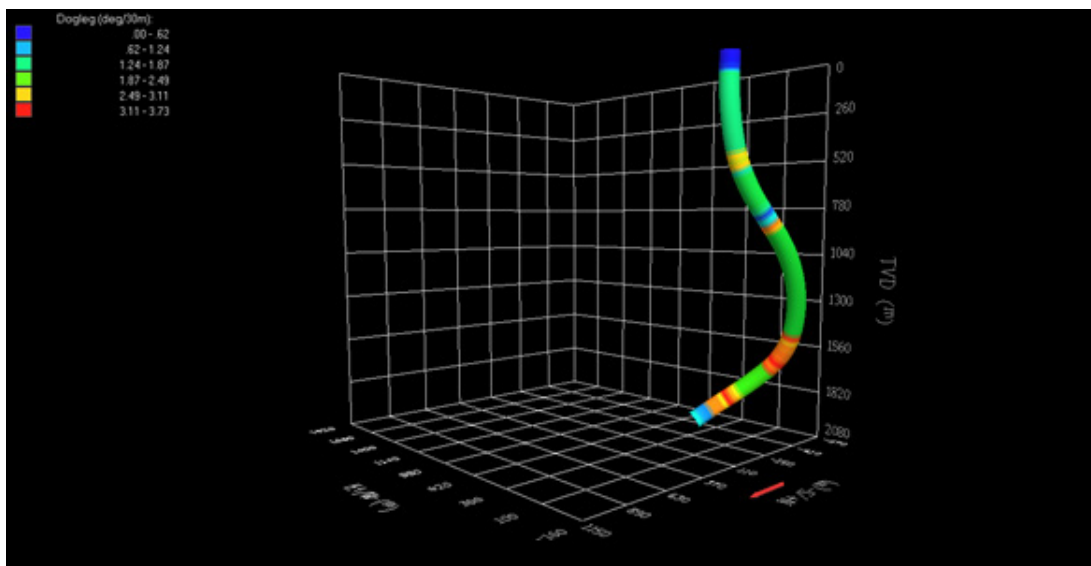
EXPAND-O-LIZER® SS 9 5/8" X 12 1/4" GAUGE HOLE SEMI-RIGID CENTRALIZER

TECHNOLOGY: Downhole Products one piece Expand-O-Lizer SS centralizer provides maximum standoff in any gauge hole section yet due to the unique combination of design and manufacture, from a proprietary grade of spring steel, the unit will compress to pass swelling shales and open hole restrictions with minimal weight applied. Restore force on these units is around 2 ½ - 3 times that of API recommended with zero run force to be considered.

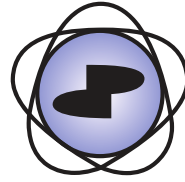
PERFORMANCE: A major South East operator selected the Downhole Products Expand-O-Lizer for their 9 5/8" casing run into a 12 1/4" open hole section.



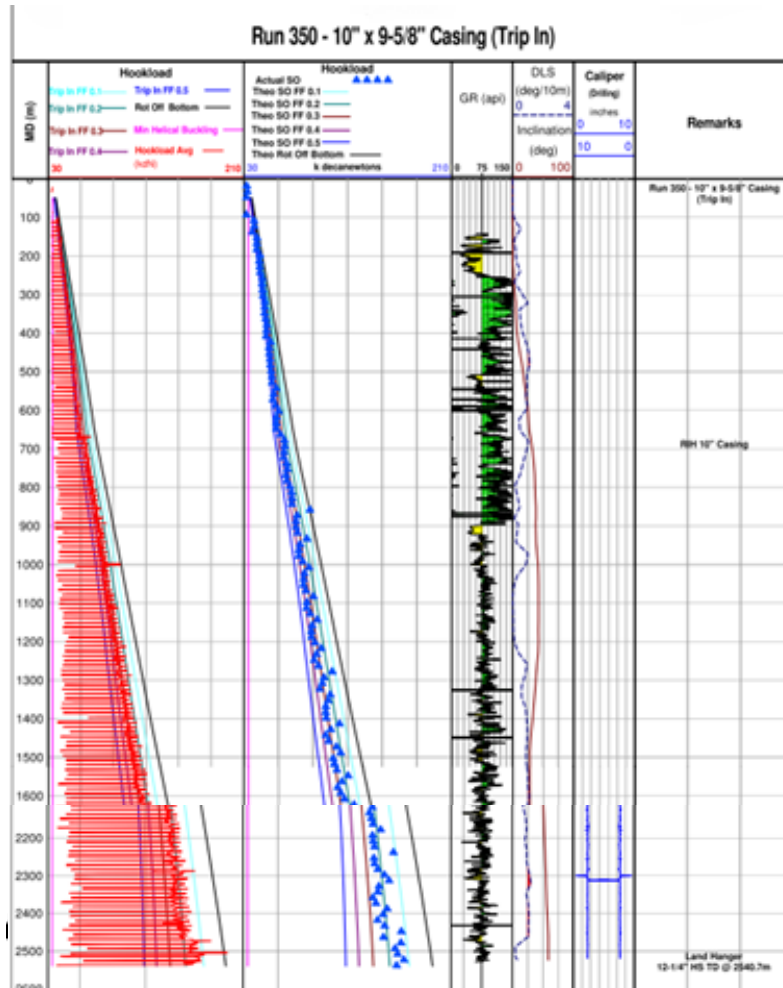
The Expand-O-Lizer SS bow centralizers were run with 1 centralizer per joint to achieve a minimum standoff of 70% across the 565m 12 1/4" openhole section to a total depth of 2,950m MD at 59 deg inclination. Average friction factors of 0.15 - 0.25 were recorded while running in the open hole section by utilizing synthetic oil based mud.



For further information on this tool and proposed applications, please contact your local DHP representative. Specifications may be liable to change without prior notice.



RIH DRAG CHART



The casing was run and cemented with lower than expected drag, minimum standoff requirements were surpassed and a saving of some 25% was achieved on previously supplied centralizers from a competitor...All in all...a good days work!

For further information on this tool and proposed applications, please contact your local DHP representative. Specifications may be liable to change without prior notice.