

DOWNHOLE  
PRODUCTS

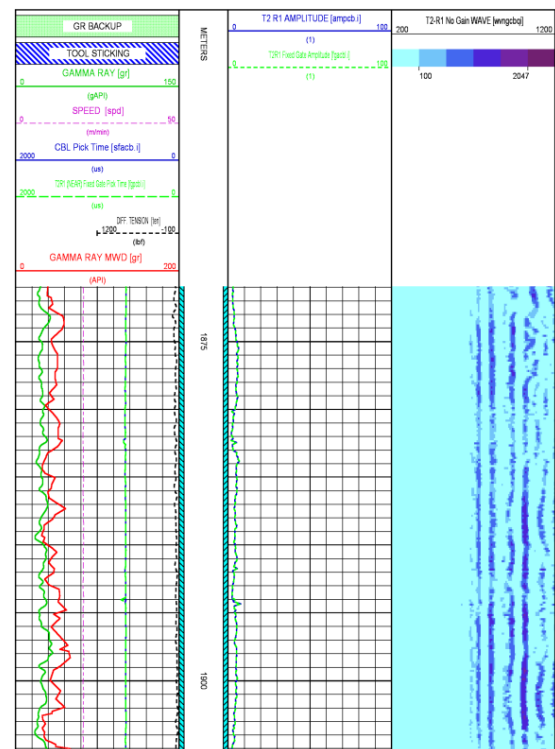
## EXPAND-O-LIZER® SS (STANDARD SERVICE) SPRING STEEL GAUGE HOLE CENTRALIZER

**TECHNOLOGY:** Downhole Products one-piece Expand-O-Lizer SS centralizer provides maximum standoff in any gauge hole section yet due to the unique combination of design and manufacture, from a proprietary grade of spring steel, the unit will compress to pass swelling shales and open hole restrictions with minimal weight applied. Restore force on these units is around 2 ½ - 3 times that of API recommended with zero run force to be considered.

**CHALLENGE:** A major Vietnamese operator contacted DHP for advice on centralization of an isolation critical 9 5/8" casing string in 12 ¼" openhole. Simulations were run which indicated a spacing plan of 1 per joint would achieve the desired cement coverage with manageable RIH drag being predicted.

**PERFORMANCE:** The centralized 9 5/8" string was run to TD within simulation indicated parameters where it was cemented and landed off. Due to the isolation requirements for the section it was deemed necessary to run a cement bond log (CBL) over the isolation critical cemented section. The CBL was run and the information plotted. The client was delighted with the results which were better than any of the previously CBL recorded sections in the field.

Drilling Superintendent Johnnie Tan commented  
"Great 9 5/8" Casing Cement Job"



For further information on this tool and proposed applications, please contact your local DHP representative. Specifications may be liable to change without prior notice.