

DOWNHOLE  
PRODUCTS

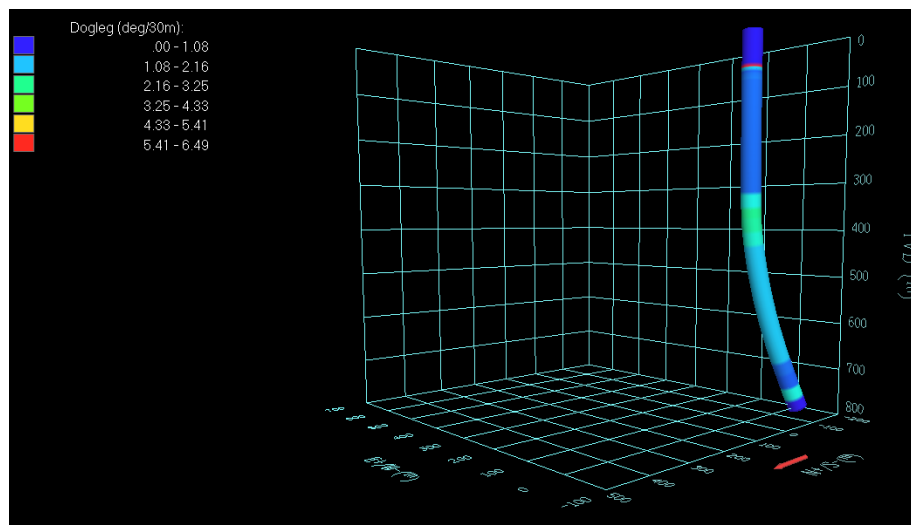
## EXPAND-O-LIZER® SS (STANDARD SERVICE) SPRING STEEL GAUGE HOLE CENTRALIZER

**TECHNOLOGY:** Downhole Products one piece Expand-O-Lizer SS centralizer provides maximum standoff in any gauge hole section yet due to the unique combination of design and manufacture, from a proprietary grade of spring steel, the unit will compress to pass swelling shales and open hole restrictions with minimal weight applied. Restore force on these units is around 2 ½ - 3 times that of API recommended with zero run force to be considered.

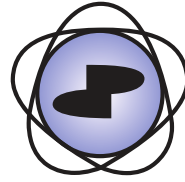
**PERFORMANCE:** A major South East Asia operator selected the Downhole Products Expand-O-Lizer SS for their 18 5/8" casing into a 24" open hole due to concerns raised about the ability of standard hinged type bow spring centralizers to have enough bow restore force to properly centralize the weighty string.



The Expand-O-Lizer SS were installed and run at 1 per joint to achieve the desired standoff over the cemented section. The string was run to TD of 808m MD at an inclination of 23.89 degrees. An average of 0.20 to 0.30 FF was recorded while running the 18 5/8" casing c/w (22) Expand-O-Lizer SS and (44) Heavy Duty Stop Collars through the openhole section, fluid in the hole was WBM (1.11 S.G.)



For further information on this tool and proposed applications, please contact your local DHP representative. Specifications may be liable to change without prior notice.



**HALLIBURTON ADT Optimisation RT Drag Profile**

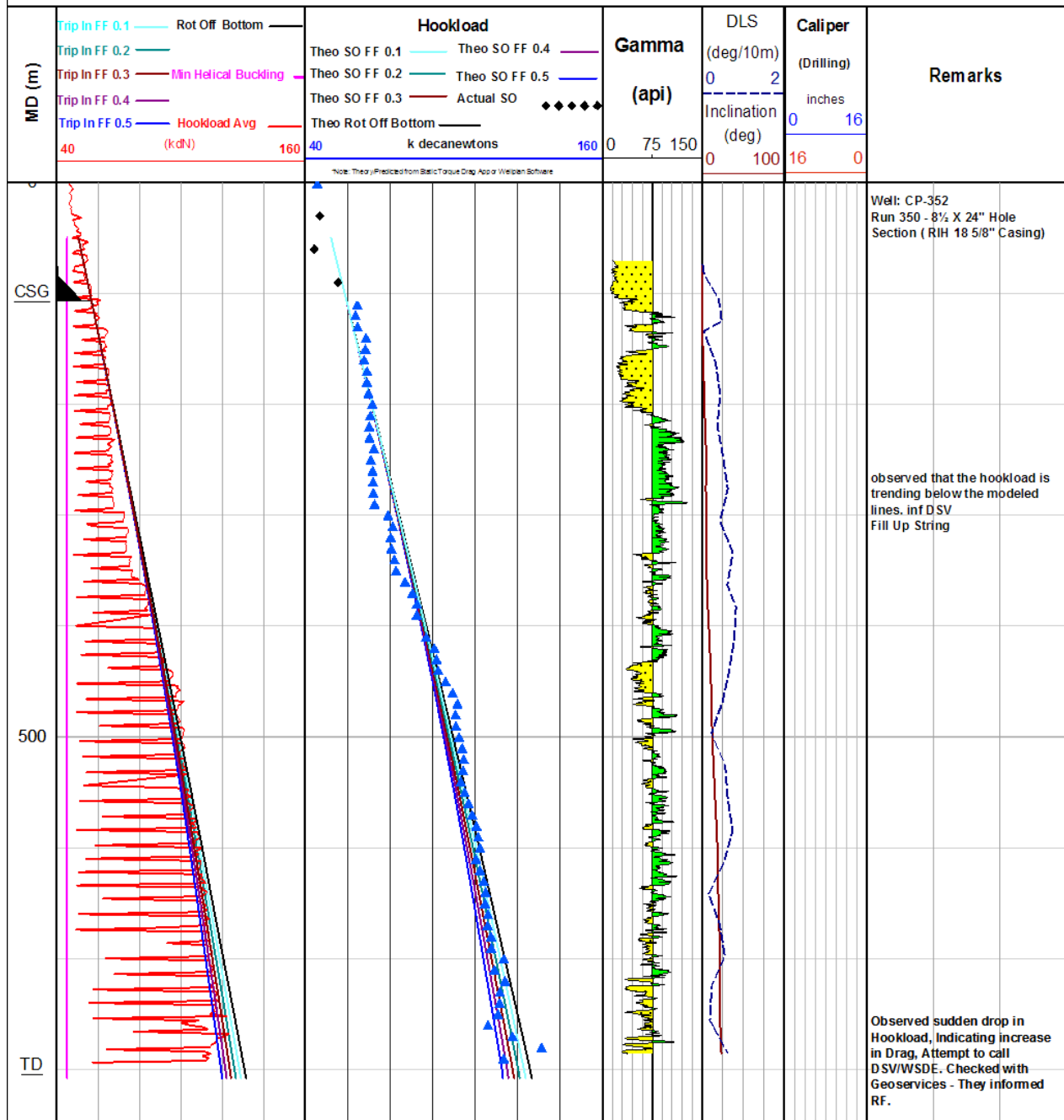
Sperry Drilling



**DD-8**

**CP-352**

**Run 350 - RIH with 18 5/8" Casing**



For further information on this tool and proposed applications, please contact your local DHP representative. Specifications may be liable to change without prior notice.